

International perspectives and initiatives on “third spacers”

Dr Michelle Barker

OECD GSF Expert Group Chair, Digital Workforce
Capacity and Skills for Data Intensive Research

Director, Research Software Alliance

Email: michelle@researchsoft.org

Twitter: @Michelle1Barker

Copy of slides:
tinyurl.com/y7gedldc



OECD Global Science Forum Expert Group on Digital Workforce Capacity for Data Intensive Research



Recommendations to policy makers on how to facilitate the digital workforce capacity needed for data-intensive research, based on analysis of best practice.

Members from 15 countries, lit review, 13 case studies, international expert workshop.

Report out mid-year.



Academic
Data Science
Alliance

The
Alan Turing
Institute

CIFAR
CANADIAN
INSTITUTE
FOR
ADVANCED
RESEARCH

J P C O A R
オープンアクセスリポジトリ推進協会



gesis
Leibniz-Institut
für Sozialwissenschaften

A R D C
Australian Research Data Commons

Software
Sustainability
Institute

 THE
CARPENTRIES

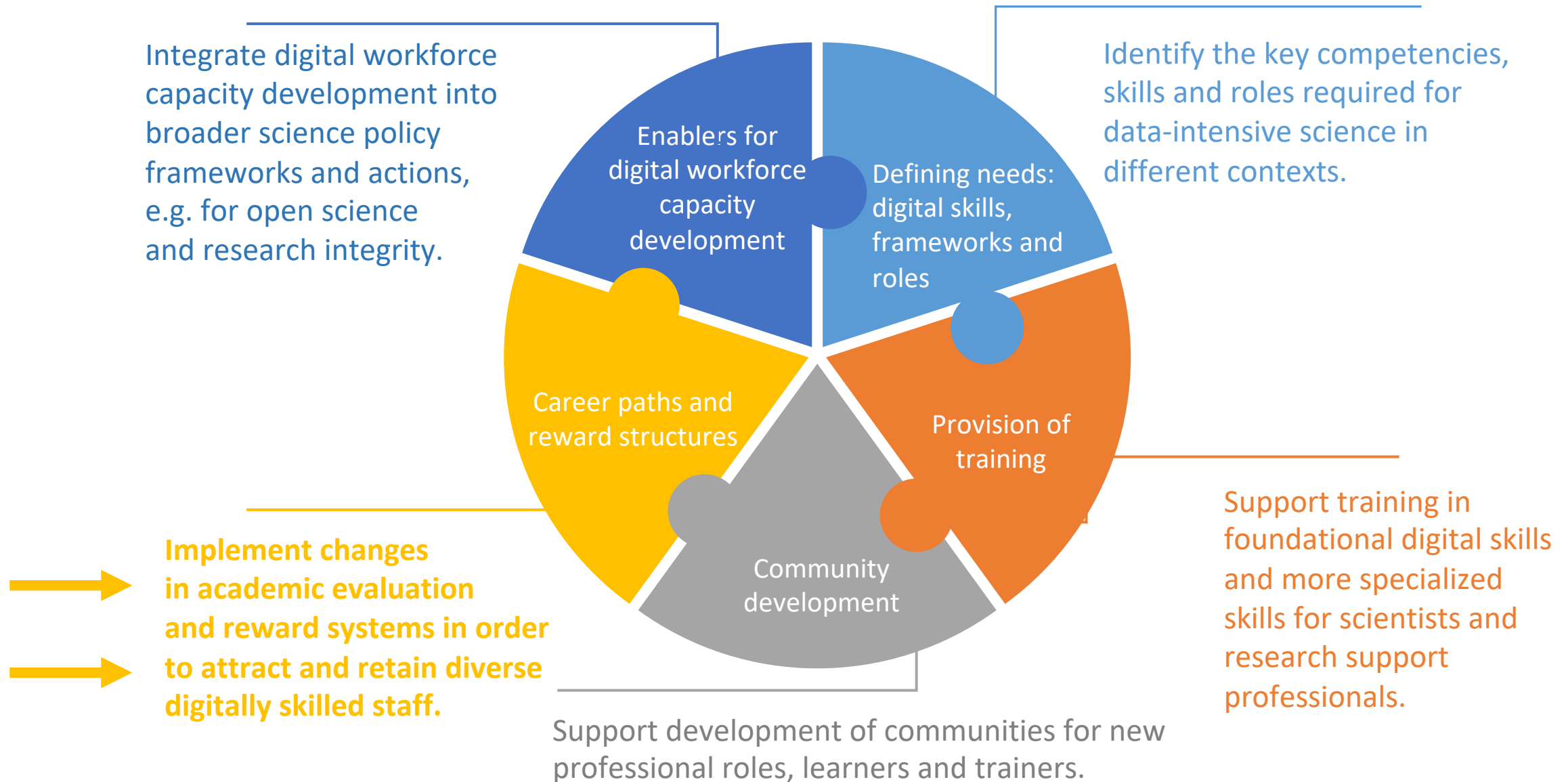

RESEARCH DATA ALLIANCE

 **TU Delft**
Delft University of Technology

 **elixir**


MILLENNIUM
INSTITUTE OF
ASTROPHYSICS

OECD report identifies change needed in 5 areas:



OECD report: Recommendations for universities

- Develop and adopt frameworks to employ digital research support professionals in stable positions with opportunities for career advancement.
- Implement systemic institutional change around careers paths and alternative metrics to recognise a broader range of research contributions.
- Recognise datasets and software as valued research outputs.
- Incentivise collaborations between domain researchers and digital support staff with metrics that recognise the contributions of all members of research teams.
- Promote collaboration and exchange across industry and academia and recognise non-academic success for people wishing to re-enter academia.
- Encourage and support cross-sectoral digital skills initiatives .



Some evidence of the challenges



Australian research sector (2019)

1 EFT per 65 researchers
1 EFT per 90 researchers
1 EFT per 100 researchers

1 EFT per 200 researchers
1 EFT per 250 researchers

Collection and analysis of research data
Stewardship of research data
Software-engineering support

Software training/advice
Training/advice on research data

Other international initiatives (& with thanks to)

- [Sorbonne Declaration on Research Data Rights](#) - Go8 signed

... the development of appropriate recognition for researchers who make their data FAIR and share it with appropriate open data licenses.

- San Francisco [Declaration on Research Assessment](#) (DORA) – UoM signed

... recognises the need to improve the ways in which outputs of scholarly research are evaluated.

- [Society of Research Software Engineering](#) - [Australia/NZ RSE](#)

- [RDA Professionalising Data Stewardship IG](#)

- [EOSC Executive Board Working Group: Skills and Training](#)

- [Open Science Policy Platform](#)

- [Academic Data Science Alliance](#) (US)

- [US NSF grant proposal guidelines](#) (2013): Biosketch can include products

